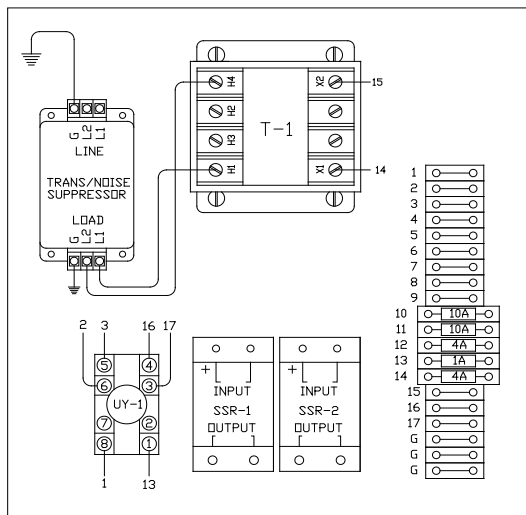


RRS TECH Bulletins are published by LSC a RelaDyne Co. for the purpose of disseminating information. RRS TECH Bulletins are used to inform of issues that effect the operation, application and use of RRS products and services. The information herein has been approved for dissemination..

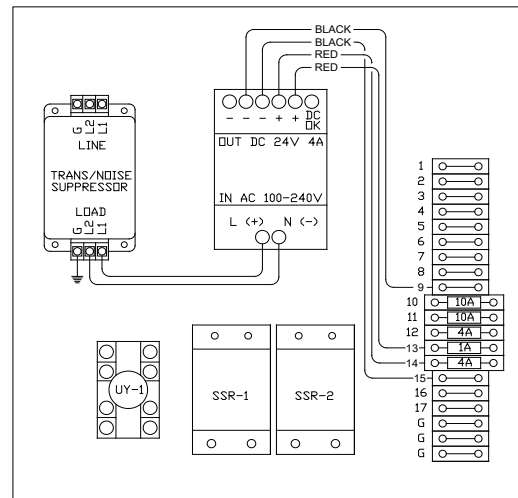
Subject: Phoenix Quint Power Supply wiring for Retro Replacement Kits IVT 77740239 & JD 77740242.

Overview: Tech Bulletin is provided on how to wire the new style Phoenix Quint Power supply part # 77780794

Open the AC power sssr enclosure for the IVT/JD and locate either the transient-noise suppressor and the power transformer (T-1) or the old-style Phoenix Contact green power supply.



transient-noise suppressor
power transformer



Green Phoenix Power Supply

IMPORTANT

If the AC electrical enclosure still has the power transformer, refer to Solid State Controller Replacement Kit instructions 77740239 for replacing the power transformer with the new power supply 77780794.

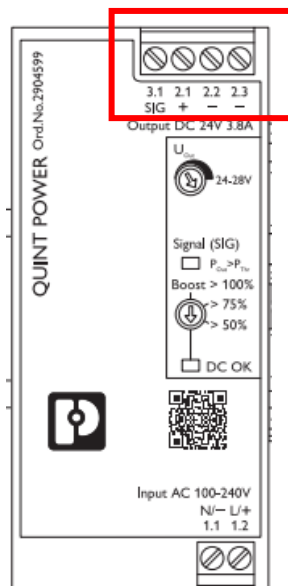
Once the new power supply is installed. Continue with instructions below.

IMPORTANT

If the AC electrical enclosure has the old-style Green Phoenix Power Supply, Continue with instructions below.

1. Green Phoenix Power Supply IVT—Locate and remove the 4 wires on top of the green power supply (9,13,14,15). Do not remove wires from terminal blocks.
2. Green Phoenix Power Supply: JD-- Locate and remove the 4 wires on top of the green power supply (7,10,11,12). Do not remove wires from terminal blocks.

3. For IVTN equipment, Insert the two black wires and one red wire into the top of the Phoenix Quint Power Supply,
 A Black wire from Terminal block 9 into -2.2
 A Black wire from Terminal block 15 into -2.3
 A Red wire from Terminal block 13 into +2.1
4. For JD equipment, Insert the two black wires and one red wire into the top of the Phoenix Quint Power Supply,
 A Black wire from Terminal block 7 into -2.2
 A Black wire from Terminal block 12 into -2.3
 A Red wire from Terminal block 11 into +2.1
5. For IVTN equipment, Keep the red wire in Terminal block 14, cut the red wire on the Terminal block 14 to 2" length, then insert it into the terminal block 13 next of it (it served as the jumper wire of the terminal block 13 & 14)
6. For JD equipment, Keep the red wire in Terminal block 10, cut the red wire on the Terminal block 10 to 2" length, then insert it into the terminal block 11 next of it (it served as the jumper wire of the terminal block 10 & 11).



Note

3.1 SIG is not used. It is for monitoring only.

Dan Hong
Machine Integration Engineer